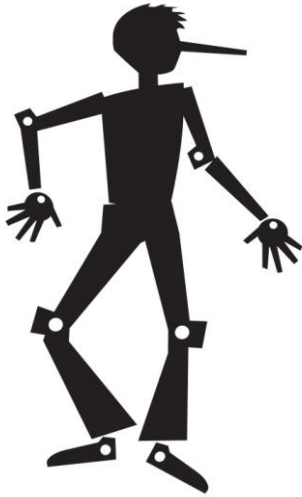


No Strings Attached

**Presented by
Centerstage Academy**

**Summer Music Theatre Camp
July 18-23**

Audition Information



We are excited about your upcoming audition for the Summer Music Theatre Camp! When you register, you will receive your script and CD (with vocals and accompaniment). If you haven't, please contact the studio office (890-0175) as soon as possible. If you are interested in a speaking part, you will also need to reserve an audition time. Here are a few things to remember as you prepare for the audition.

Auditions for Speaking Roles

If you are interested in an acting/speaking role, check out the script excerpts (we've included a list of the excerpts in this packet). Most roles/characters are represented, so pick your favorite to prepare. You will have an opportunity to work on this excerpt in advance—which means it should demonstrate your BEST work on the character (lines, expression, projection, etc.). Memorization is not required, but strongly recommended, as this will demonstrate initiative and give you more freedom for physical expression and eye contact with the audition panel. After you present your prepared excerpt, we may ask you to do a "cold" reading as well, one that you haven't prepared in advance, just to see you in a different role. Some of the larger roles come with solos—make sure you prepare for the singing part of the audition if you are interested in a singing role.

Auditions for Singing Roles

If you are interested in a singing/solo part, check out the list of songs we'll be using in the auditions (included in this packet). We may ask that you sing it in its entirety, or that you to sing only a part of it. It is best if you know the entire song well and are able to sing it memorized (although not required). We'll be using the accompaniment CD, so you'll know exactly how the arrangement goes! Vocal sheets are available upon request. These contain the written music—vocal lines—for each of the songs and are helpful if you read music.

Auditions for Chorus Roles

It is not necessary for you to audition for a part in the chorus. Therefore, if you are looking forward to participating as a chorus member, you do not need to reserve an audition time. Just listen to the songs and read through the script in advance of the camp and checkpoint rehearsals!

Audition Tips

The following tips are helpful when preparing the singing/acting excerpts for the audition (you can also look on the back of your audition forms to see how you will be evaluated by the audition panel):

1. **Projection:** Speak or sing with a loud voice, so that you can be *heard* at the back of the auditorium.
2. **Enunciation:** Speak clearly, not too fast, so that you can be *understood* at the back of the auditorium.
3. **Expression:** Use good expression with your voice, face and body movements.
4. **Eye Contact:** Look up and out at your audience.
5. **Movement:** Feel free to move around and use as much stage space as you need.
6. **Exaggeration:** Use big motions, a big voice, and exaggerated expressions on stage.
7. **Characterization:** Show us that you are the character, not just someone reading their lines.
8. **Fun:** Do your best and have fun, it's not something to be nervous about!

The auditions will be individual, with only one student at a time in front of an audition panel of 2-4 people. This is a casual audition of approximately 15 minutes and will be done in a non-intimidating manner. Just relax and be yourself, then show us how you can "become" your character. The auditions may be recorded so that we can review them again later as we make casting decisions.

Audition Time & Location

Be sure you know your specific audition time, and plan to arrive a few minutes early. Auditions will be held at Centerstage, in Studio 7. You'll want to bring your completed Audition Form and Guidelines & Contract (included in this packet), as well as your script. We will come out to greet each performer and bring them into the audition room as we are ready.

Casting

The auditions are designed to place you in roles that are most suited for you, where you can grow as performers and develop your theatre skills. This is a large cast production, and there is something for everyone—both beginners and veterans alike. Everyone will be a part of the production, either in a speaking role or the chorus!

Casting will be done within a week, and will be announced via email and posted to the camp website (www.MusicTheatreCamp.com). Once you know what character(s) you'll be portraying, start memorizing your lines and songs! Learning your lines/songs is only the first basic step—and that must be done as quickly as possible so that we can get to the blocking and characterizations.

Only One Week?!

As you know, our theatre camp is scheduled for only one week this summer — July 18-23! But remember, we start at 9am and go until 5pm — that's equivalent to 20 two-hour rehearsals!

Also, I'll be meeting with characters individually and in small groups during the weeks prior to the camp. This will accomplish two purposes:

- First, we can work around your busy summer schedules (be sure to list all vacation dates on your audition form).
- Second, I can initially accomplish more in small groups. We can really get into the "meat" of the material when we work one-on-one or in small ensembles. We'll add in the blocking and any solo musical numbers (with vocals and choreography), and do a few ensemble rehearsals for specific scenes/characters.

How many of these individual/ensemble rehearsals will be required will depend on the individual and role. We usually do a few large group and "company" rehearsals to begin some of the choreography in advance. By the time the camp starts, we should be ready to put everything together!

Performances

Saturday performances are scheduled for 2pm and 7pm, each taking place in the Community Life Center of Grafton Baptist Church. Each student will receive 2 complimentary tickets to the show of their choice (included in this packet). Call times will be announced during camp week.

Performance Location

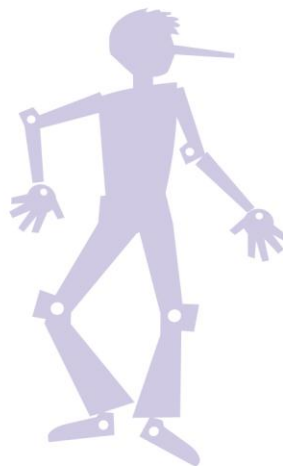
Community Life Center of Grafton Baptist Church
5440 George Washington Memorial Hwy, Yorktown, 23692
(On the corner of Dare Rd and Rte 17; next to Hardee's in Washington Square Shopping Center)

Tickets

Tickets to the performances will be \$6 each. Each performer will receive two complimentary tickets (included in this packet). We recommend that you purchase your tickets in advance (online at www.MusicTheatreCamp.com or at the studio office). Tickets will be available at the door 45 minutes before the performance. Doors will be locked prior to this; reserved seating will not be permitted. At call time, performers should arrive at the side entrance.

Production Help

This is a large production, with lots of creative possibilities. We will need the help of volunteers to make this a successful show. Specifically, we'll need parents and or older siblings to help with set construction/painting, prop acquisition, make-up, set changes, costume changes, lighting, ticket sales, and concessions. Please indicate on your audition form the area you would be able to serve.



No Strings Attached

Based on the classic by Carlo Collodi

Book by Patrick Rainville Dorn
Music and Lyrics by Bill Francoeur

Everyone's favorite knothed gets an extreme makeover in this hip and hilarious musical adaptation of the classic tale of a talking puppet who gets into all kinds of trouble before learning what it truly means to be human. Especially adapted for teens, this adaptation puts a fresh and contemporary spin on the scenes and characters from the original classic with lots of slapstick humor, clever wordplay and a wide range of musical styles including hip-hop, gypsy swing, bluegrass and good ol' rock 'n' roll!

When Carl, a teenager, wants to run away from home, he applies for a job with the mysterious Professor Pinecone and his traveling magical marionette puppet show. He quickly discovers, however, that the position comes with all kinds of strings attached. Once he feels the magical jolt in the Professor's handshake, he embarks on the audition of his life. In this play-within-a-play, Carl becomes Pinocchio and improvises his way through the story, meeting some familiar characters — including a cricket with an attitude ("I'm Gonna Bug Ya"), the devious fox and cat ("Easy Money") and the memorable Blues Fairy ("Blues Fairy Mama") — as well as some new ones. With the help of this eclectic cast, Carl stumbles upon life's lessons as he's forced to make important decisions. After a string of poor choices (which makes his nose grow and ultimately leads him to make a donkey of himself), he finally does something good for a change by saving Geppetto from the mouth of a giant shark. With fun dialogue, a variety of modern music and a surprise ending, audiences of all ages will enjoy this new take on an old favorite!

Cast of Characters

PROFESSOR, puppet master, 70 lines

MADAME AZURE, crotchety hag with blue hair, 49 lines

CARL/PINOCCHIO, reckless teenage boy, 324 lines

GEPPETTO, kind, elderly man, 53 lines

CRICKET, conscientious bug, 102 lines

FOX, wily canine, 56 lines

CAT, fickle feline, 46 lines

MOTEL OWNER, lacks hospitality, 14 lines

MOTEL OWNER'S WIFE, allergic to pets, 15 lines

SPARKY, fire sprite, 16 lines

PEG, wily woodpecker, 17 lines

PAUL, lumberjack with an ax to grind, 17 lines

UPHOLSTERER, chair carrier, 11 lines

RUG RAT, carpet whacker, 14 lines

BLUES FAIRY, magical matron with blue hair, 79 lines

MARY ANNETTE, wise and caring girl (actress also plays older version of character), 34 lines

DIPSTICK, magnet for trouble, 46 lines

DRIVER, cruel taskmaster, 38 lines

DONNA, donkey, 15 lines

FANNIE OAKLEAF, owns a Wild West Show, 20 lines

TRINA, ballerina and choreographer, 12 lines

TINA TUNA, plucky chicken of the sea, 18 lines

CHORUS

(Magical Marionettes, Townspeople, Bug Chorus, Villagers, Backup Singers, Students, Revelers/Donkeys, Tuna Fish)



Audition Excerpts

For Speaking Roles:

Professor/Madame Azure/Carl	pp. 2-6
Pinocchio	pp. 9-10, 22-24 (scene 3), 47-48
Geppetto	pp. 9-10, 52-53
Cricket	pp. 11, 22-24
Fox/Cat	pp. 18-20
Motel Owner/Wife	pp. 16-18
Peg/Sparky/Paul	pp. 24-26
Upholsterer	p. 27
Rug Rat	p. 28
Blues Fairy	pp. 29-31
Mary Annette	pp. 34-35
Dipstick	pp. 34-36, 42-43
Driver	pp. 42-44 (scene 1)
Donna	pp. 43
Fannie Oakleaf/Trina	pp. 44-45
Tina Tuna	pp. 51

For Singing/Solo Roles:

Professor/Madame Azure	ALL THE WORLD'S A STAGE (Prologue & Epilogue)
Professor/Madame Azure	NO STRINGS ATTACHED
Carl/Pinocchio	ROCKIN' DOWN TO HEDONIA
Carl/Pinocchio	I'M ON MY WAY BACK HOME
Cricket	I'M GONNA BUG YA
Fox/Cat	EASY MONEY
Blues Fairy/Backup Singers	BLUES FAIRY MAMA
Dipstick	ROCKIN' DOWN TO HEDONIA
Driver	WELCOME TO HEDONIA

Contact Information

If you have questions regarding the auditions or any matters regarding the camp, please feel free to contact any of the following Centerstage faculty. We'll be happy to answer your questions!

Rebecca Lowe, Director

csbuzz@aol.com or leave a message at the studio office

Blanche Brooks, Bookkeeper

Meggie Lowell, Office Assistant

(757) 890-0175

SUMMER OFFICE HOURS

Monday - Thursday, 2:00-7:00pm

Parent Contact Information & Student Sign-Ins

During the week of camp, students under 16 years of age will need to be signed in/out by their parent or guardian. Sign in sheets will include a phone number(s) where parents can be reached that day in case they are needed.

Guidelines & Contract

Purpose and Goals:

To develop musical theatre skills and technique, based on individual and age-appropriate levels; to provide stage and production experience; and to produce an excellent show as part of an enjoyable, rewarding experience.

Team Concept:

Each performer is part of a team. All the performers must work together in unison to accomplish the above goals. Therefore, everyone must agree to put forth their best effort in the role assigned to them by the audition panel. This part may or may not be that for which they auditioned. Regardless, before auditioning, they must commit to the character judged to be the most appropriate for them, all factors considered.

Expectations of Classes & Productions:

- A positive attitude must be maintained at all times, encouraging of others.
- All lines, songs and choreography must be learned by the deadlines given.
- Students are committed to the camp for the stated duration: July 18-23.
- Students must strive for a superior performance whether in rehearsal or performance.
- Regular attendance is expected during the camp and through all performances.

Expectations of Parents:

Parents are responsible for keeping students on track regarding assignments and attendance. Each parent is also asked to volunteer in an area of their choice (sets, props, backstage help, lighting, tickets, etc.).

Costumes:

Centerstage will provide Cast T-Shirts, which will be used as a "base" for the costumes. Students will need to provide appropriate pants, shoes and any additional items required. More extensive costumes for certain will be provided for the duration of the camp, to be returned to the "Costume Closet" at the end of the show. Students are expected to maintain the costume's quality throughout the rehearsals/performances, and to return them in their original condition.

Right of Director:

The director reserves the right to terminate any performer's participation if any of these guidelines are not being met.

I have read and understand the above policies and agree to abide by them.

Date

Signature of Student

Signature of Parent

Audition Form

Centerstage Academy

Name _____

Age _____ Grade _____ Male or Female

T-Shirt Size (circle one): YS YM YL S M L XL XXL

Theatre Experience:

Music Experience:

Other Experience or Talent:

Will you be able to attend each day of camp in its entirety? _____

Please list all known dates (such as vacations, other camps, etc) prior to July 18 for the purpose of scheduling checkpoint rehearsals.

Production Help:

- | | |
|--|--|
| <input type="checkbox"/> Set Production | <input type="checkbox"/> Backstage Costume Changes |
| <input type="checkbox"/> Prop Acquisition | <input type="checkbox"/> Backstage Set Changes |
| <input type="checkbox"/> Make-Up & Hair | <input type="checkbox"/> Lighting |
| <input type="checkbox"/> Costume Fittings & Production | <input type="checkbox"/> Tickets |

First choice of roles _____

Second choice of roles _____

DO NOT WRITE ON THIS PAGE

Audition Panel Use Only

VOCAL ABILITY: 1 2 3 4 5

Quality:

Pitch:

Diction:

Range:

Expression:

STAGE PRESENCE: 1 2 3 4 5

Physical appearance:

Imagination:

Sense of movement:

Projection:

Expression:

Ability to capture audience interest:

Ability to capture qualities of the character during climactic scene:

Maturity/Cooperation Level:

ROLES CONSIDERED FOR: